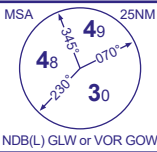


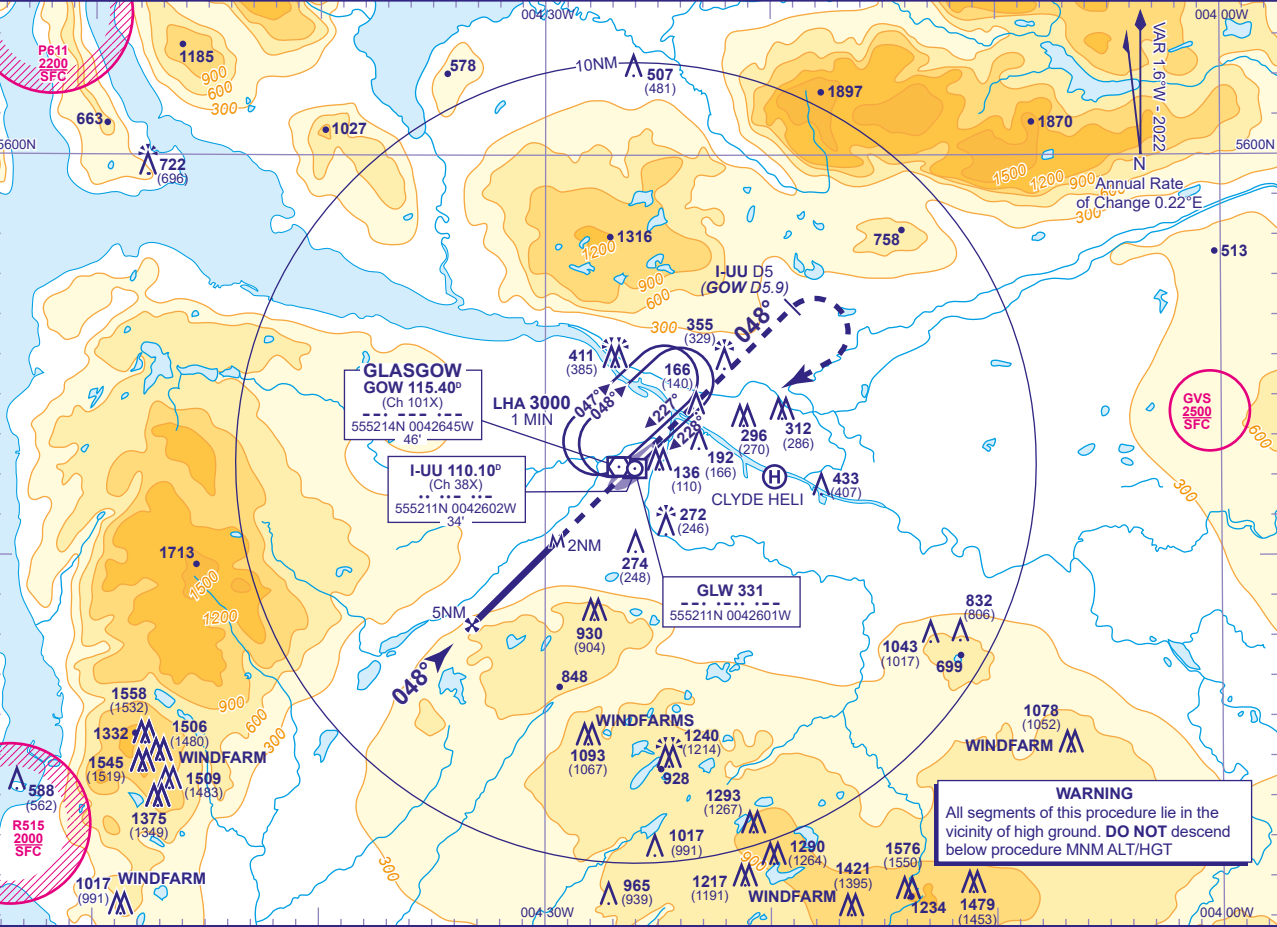
INSTRUMENT APPROACH CHART - ICAO

GLASGOW
SRA RTR 2NM
RWY 05
(ACFT CAT A,B,C,D)



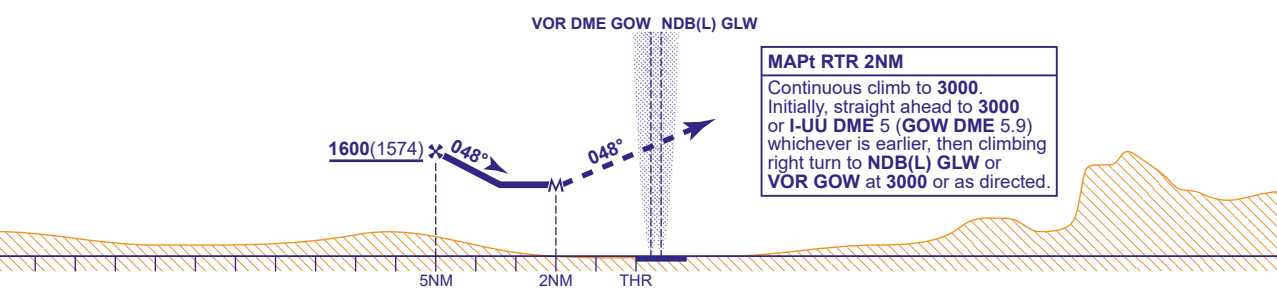
APP	119.100	GLASGOW APPROACH	AD ELEVATION	26
TWR	118.805	GLASGOW TOWER	THR ELEVATION	26
	121.705	GLASGOW GROUND	OBSTACLE ELEVATIONS	1576 AMSL (1550) (ABOVE THR)
RAD	119.100, 125.250, 128.755	GLASGOW RADAR		
ATIS	129.575	GLASGOW INFORMATION	BEARINGS ARE MAGNETIC	

TRANSITION ALTITUDE	6000
---------------------	------



RADAR ADVISORY HEIGHTS Gradient 5.19%, 315FT/NM			
NM	5.0		4.0
ALT(HGT)	1600(1574)		1290(1264)

Initial and intermediate approach as directed by radar. (See note 1).



Aircraft Category		A	B	C	D	Rate of descent	G/S KT	160	140	120	100	80
OCA (OCH)	Procedure	1080(1054)	1080(1054)	1080(1054)	1080(1054)		FT/MIN	840	740	630	530	420
VM(C)OCA (OCH AAL)	Total Area	1080(1054)	1080(1054)	1400(1374)	1700(1674)							

NOTE 1 Minimum descent in the intermediate approach area until with 7NM radar range to touchdown is 2000.
2 Position overhead holding fixes according to inbound routing as cleared by ATC. The normal cleared altitude at the respective terminal fix is 7000. As this altitude is above the Transition Level, aircraft will be instructed to fly the appropriate flight level.
3 Aircraft unable to receive DME advise ATC. Radar range will be provided (if required) at 5NM in the missed approach.

CHANGE (7/23): VOR GOW RECALIBRATED. VOR GOW HOLD.